

**Using conjunctions to
express time, place or
cause.**



Verbs

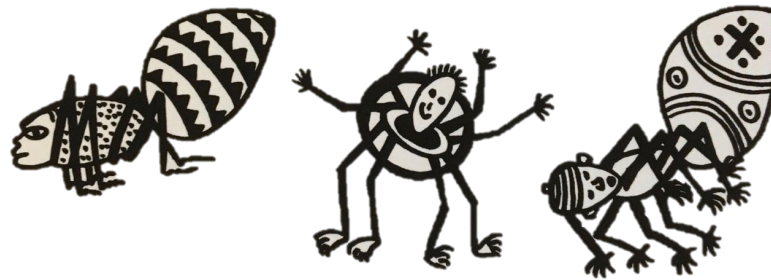
A **verb** indicates what someone or something is **doing, feeling** or **being**.

He **climbs**.

The spider **is** crafty.

The villagers **despair**.

I **saw** him!



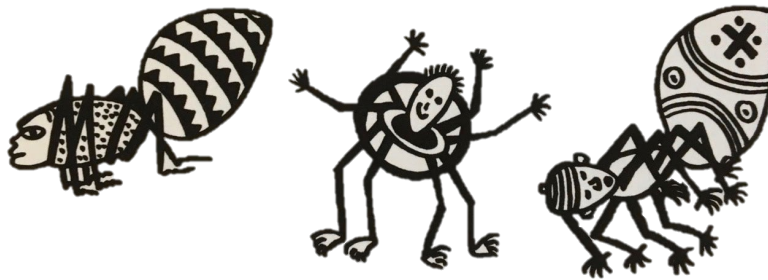
Verb Phrases

A **verb phrase** can be a *single verb* or a string of verbs.

The other animals *think* he is tricky.

He has had all sorts of adventures.

He has been causing problems for everyone.



Clauses

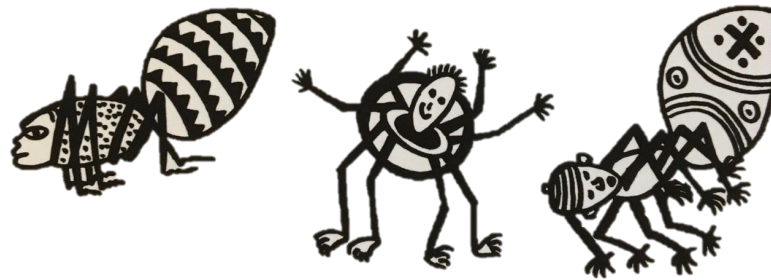
Clauses are groups of words with a **verb phrase** and a **subject**.

Ananse **lives** in a village.

He **looks** like a spider.

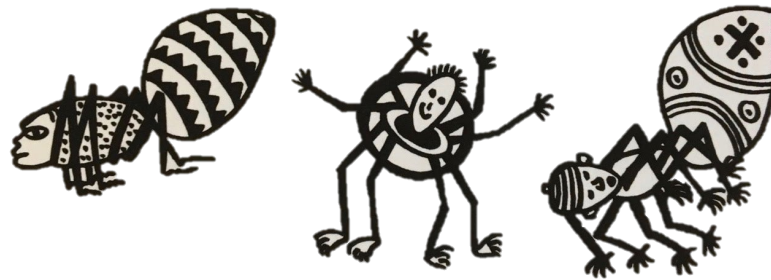
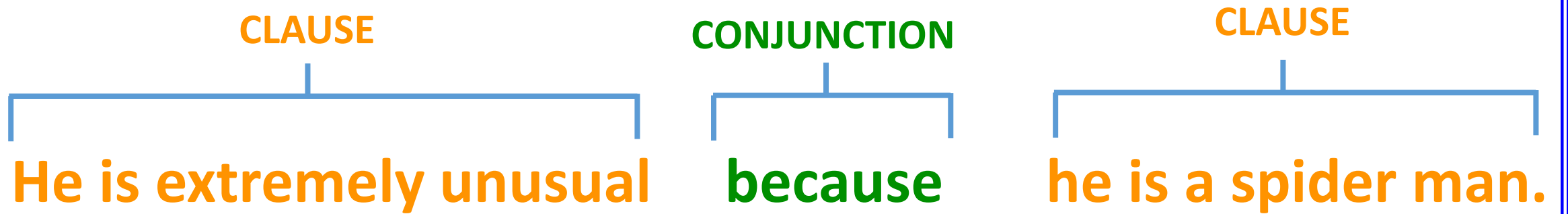
The other animals **think** he is tricky.

He **has had** all sorts of adventures.



Conjunctions

Conjunctions are words that join **clauses** into sentences.



Conjunctions

Conjunctions are words that join **clauses** into sentences.

Cause

because

as

so

since



Time

after

before

when

since

until

as

while

Place

where

wherever



End

